



MT300 PICO BROADCASTER™ ETHERNET IN (TRANSPORT) TO (ATSC) BROADCAST OUT

INPUT AUDIO/VIDEO

- Ethernet (MPEG2 Transport)

OUTPUT

- ATSC modulated broadcast signal
- Full HD Digital TV signal
- Stereo / Dolby Digital audio
- Output power variable up to 30dBmV
- White space database compliant channel selection.

CONTROL

- Ethernet

KEY BENEFITS

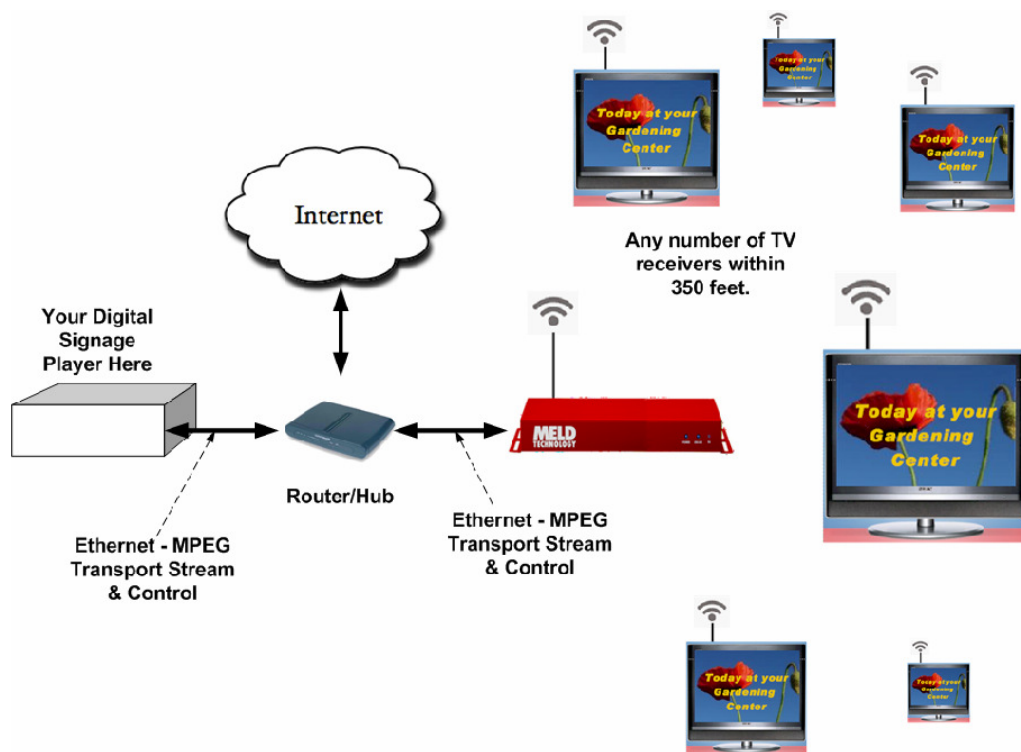
- Full HD
- Easy & Affordable
- Proven technology used by professional broadcasters
- No cabling needed
- Supports unlimited number of TVs.
- Works with any off-the-shelf HDTV without additional decoder boxes

GENERAL

- Power 12V, 3.5A wall adapter
- NO INTERNAL FAN NEEDED
- NO MOVING PARTS fans or hard drives
- Enclosure Type - Metal
- Operating Temperature +32° to +131° F
- MTBF – 30,000 hours
- Compliance Safety UL60065
FCC Class B



DESCRIPTION: MELD's patented Pico Broadcaster™ sends live full HD content wirelessly to any number of DTVs located in an unobstructed effective range of 360 feet, about the size of a football field. No cabling or infrastructure equipment investment needed.



For more information and pricing contact:
sales@meldtech.com

US Pat No: 8,063,996
other patents pending