



MT300 PICO BROADCASTER™ ETHERNET IN (TRANSPORT) TO (ATSC) BROADCAST OUT

INPUT AUDIO/VIDEO

- Ethernet (MPEG2, H.264 Transport)

OUTPUT

- ATSC modulated broadcast signal
- HD Digital TV signal
- Stereo / Digital audio
- Output power variable up to 40mW, (30dBmV)
- White space database compliant channel selection.

CONTROL

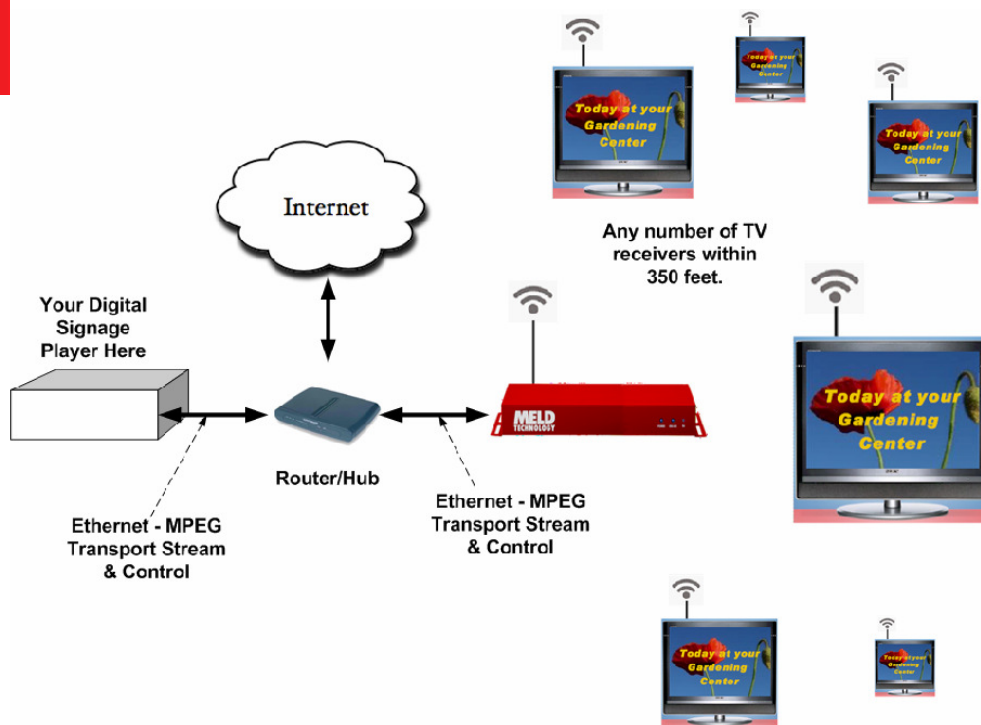
- Ethernet

KEY BENEFITS

- Wireless multicast DTV HD compatible signal
- Easy & Affordable
- Proven technology used by professional broadcasters
- No cabling needed
- Supports unlimited number of TVs.
- Works with any off-the-shelf HDTV without additional decoder boxes

GENERAL

- Power 12V, 3.5A wall adapter
- NO INTERNAL FAN NEEDED
- NO MOVING PARTS fans or hard drives
- Enclosure Type - Metal
- Operating Temperature +32° to +131° F
- MTBF - 30,000 hours
- Compliance
Safety UL60065
FCC Class B



DESCRIPTION: MELD's Pico Broadcaster™ sends live MULTI-CAST HD content wirelessly to any number of DTVs located in an unobstructed effective range of 360–1000 feet. No cabling or infrastructure equipment investment needed.



For more information and pricing contact:
sales@meldtech.com

US Pat No: 8,063,996
other patents pending